

Refurbishing is our Art



Specialist In: Refurbishing Steam Turbine & Air Compressors

M.A. Rasheed

Engineering Works

Near Jamilabad Chowk, Sheikhupura Road, Faisalabad-Pakistan.

E-mail: marew@gmail.com

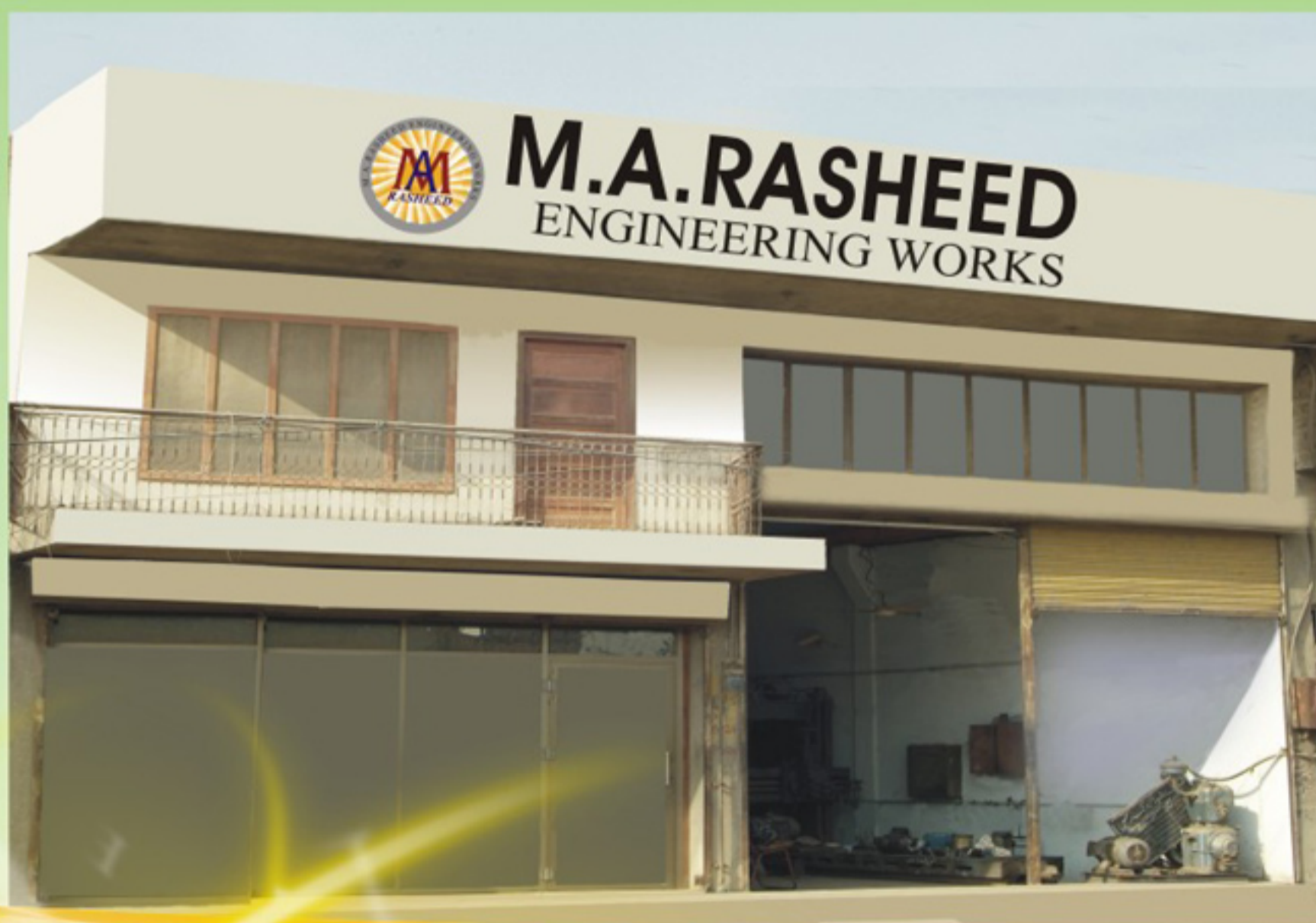
M.A. RASHEED ENGINEERING WORKS

We M.A. RASHEED Engineering Works are engaged in repairing and refurbishing of old turbines and manufacturing the various spare parts of the Sugar Mills, Cement Plants for the last 50 Years.

We have specialized machinery and specialized trained technicians to repair the old unserviceable turbine rotors.

The following jobs have been taken in hand very successfully:

1. Up-grading of Mill House & Shredder Turbines
2. Remetalling of bearings of turbines
3. Repair and re-building of worn out turbine rotor blades
4. Replacement of blades with newly manufactured blades from special alloy
5. Repaired throttle valves and their seats.
6. Repair totally damaged rotors of the steam turbines of the sugar mills.
7. Repair of Air Compressors.



Refurbishing is our Art

We are glad to inform you that these facilities have been built up by hard work and Years of our training and experience and are in a position to undertake any job of refurbishing, repairing and guarantee the working of the steam turbine repaired rotors.

We repaired various sizes worn out shafts on automatic machines by re-building and grinding. We also manufactured new white metal bearings as well as repaired worn out bearings by re-metalling white metal and also made all kind of new bearings & thrust pad and also remetalled the old ones.

If you have any job regarding the turbine to be done in the off-season you will find us at your disposal. Only on receiving a letter or telephone call, our representative would visit your site, discuss with you the work to be done and give you very favourable price and delivery period.



Shahid Javad
Director

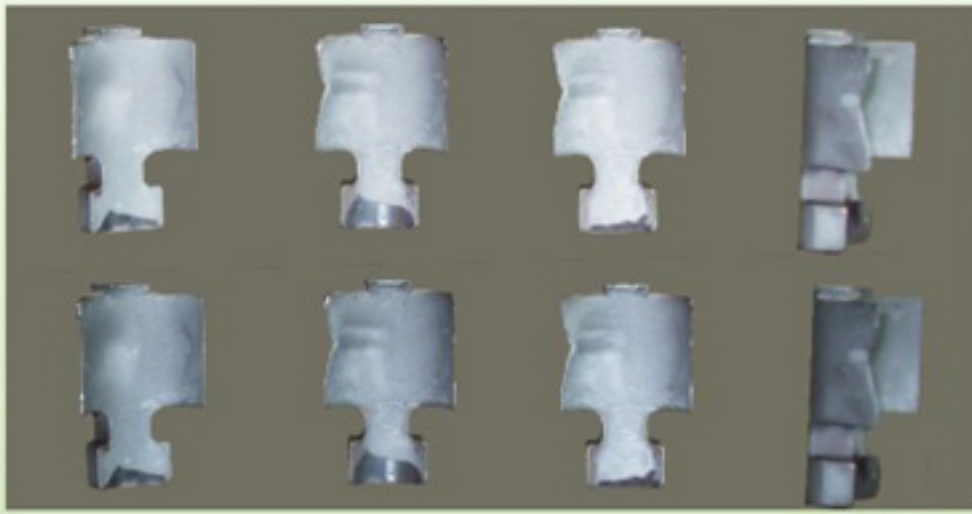


Imran Nadem
Director



Specialist In: Refurbishing Steam Turbine

Accidental and Worn out Various Types of single stage rotor Blades.



Worn out blades that used in American turbo dine turbine rotor. Before repairing.



New blades that used in American turbo dyne turbine rotor.



Before Repairing.



After Repairing.



Before Repairing.



After Repairing.

Reconditioning and refurbishing of all kinds of single stage
Turbine rotor blades 450 kw to 2000 kw.
View of new manufactured rotor blades fitting process.



Worn out blades in American turbo dyne turbine rotor.



Refurbishing Steam Turbine

Worn out all kinds of multi stage steam turbine for 2.5 MW to 5 MW & 10 MW.
Before repair 2500 KW turbo dyne
Turbine Rotor Dewan Sugar Mills



Lathe Machine 20 feet swing 48" Grinding Process



Refurbishing Steam Turbine

Multi stage steam turbine rotor for 1750 to 3000 MW.

Kamalia Sugar Mills

Before Repair



After Repair



After Repair Multistage Rotor 12000 KW Alnoor Sugar Mills



View of Power House Turbine Rotor 5 MW of Premier Sugar Mills, Mardan After Repair



Power House 10 MW Turbine Rotor blade fitting in process



View of thrust collar repairing machine



Power House Turbine Rotor alignment fitting process

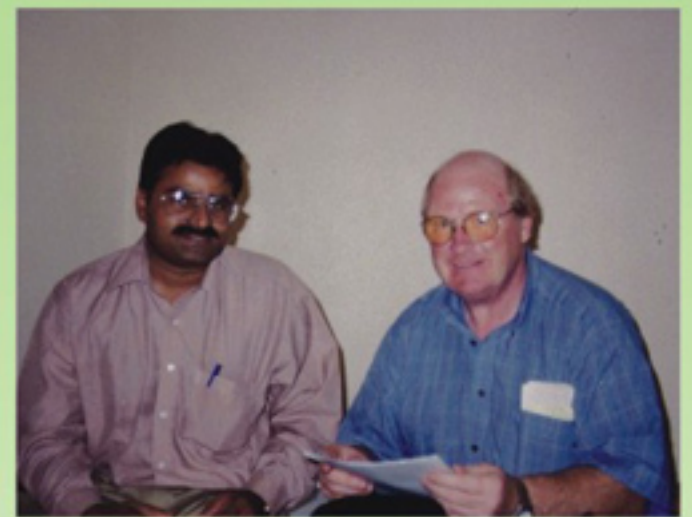


Energy Plant Power House and Mill House turbine alignment process



Following machinery are installed in our workshop

01. Lathe Machine 40 Feet Swing 48"
02. Lathe and Grinding Machine 20 Feet Swing 48"
03. Lathe Machine 10 feet swing 36"
04. Lathe Machine 8 feet swing 24"
05. Lathe Machine 8 feet swing 30"
06. Lathe Machine 6 feet = 3 Nos
07. Captain Lathe
08. Electric saw Machine
09. Planner 14 x 5 feet
10. Numerical Milling Machine No. 3
11. Vertical Facer Machine
12. Vertical Boring Machine
13. Surface Grinding Machine
14. Radial Drill Press
15. Bench Drill
16. Facer Drill
17. Power Press 80 ton
18. Power Press 150 ton
19. Hydraulic Press
20. Portable Hydraulic Press
21. Shaper Machine 20"
22. Alloy steel Argon and Arc welding Machine
350 Amp Ac Dc
23. Argon and Arc Welding Machine
400 Amp Ac Dc = 04. No
24. Co2 Welding Machine 350 Amp = 03. Nos
25. Model Mark 102
26. Plasma Welding and Cutting Machine
27. Sandblasting Machine
28. Generator welding Machine
29. Overhead Crane in Machine Shop 10 ton
30. Overhead Crane in Heavy Machine Shop 30 ton
31. Stand by Generator = 2 Nos



Work Shop View

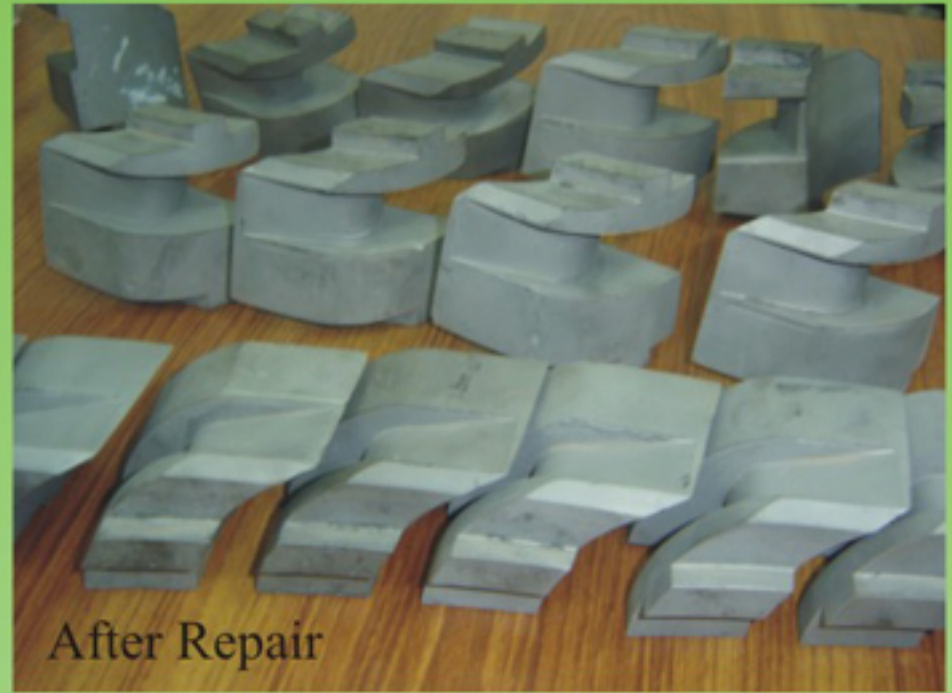
Work Shop in Steam Turbines Rotor repairing in progress



New manufacturing of Boiler feed pump KKK turbo reversing nozzle
After Repair reversing segment Mill house turbine
Mirpurkhas Sugar Mills.



Refurbishing of peter brothers and shinko turbines & KKK steam turbine nozzles.



Upgrading of Mill House & Shredder Turbine under different process
 New Manufacture of all Kinds of reversing segment for Mill House & Power House



KKK Turbine High Pressure Nozzle
 450 to 650 & 850 KW



KKK Turbine
 High Pressure Nozzle
 450 to 650 & 850 KW



Steam Inside View
 Before Upgrade



Steam Inside View
 After Upgrade

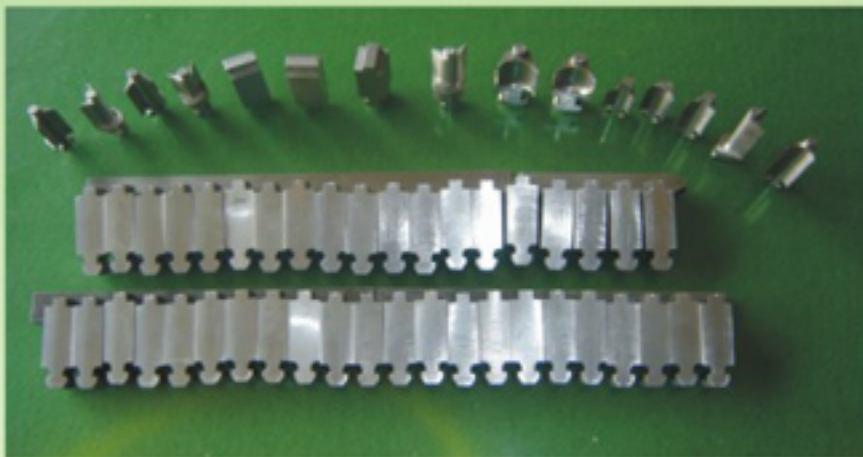
Upgrade Shinko Turbine First Stage High Pressure Nozzle 1500 to 2000 KW Chinar Sugar Mills



Steam Outside View
 Before Upgrade



Steam Outside View
 After Upgrade



New Manufacturing all kinds of
 turbine rotor blade



New Manufacturing of all kinds of
 reversing segment

New Manufacturing of first stage high pressure nozzle view Turbine process mill house



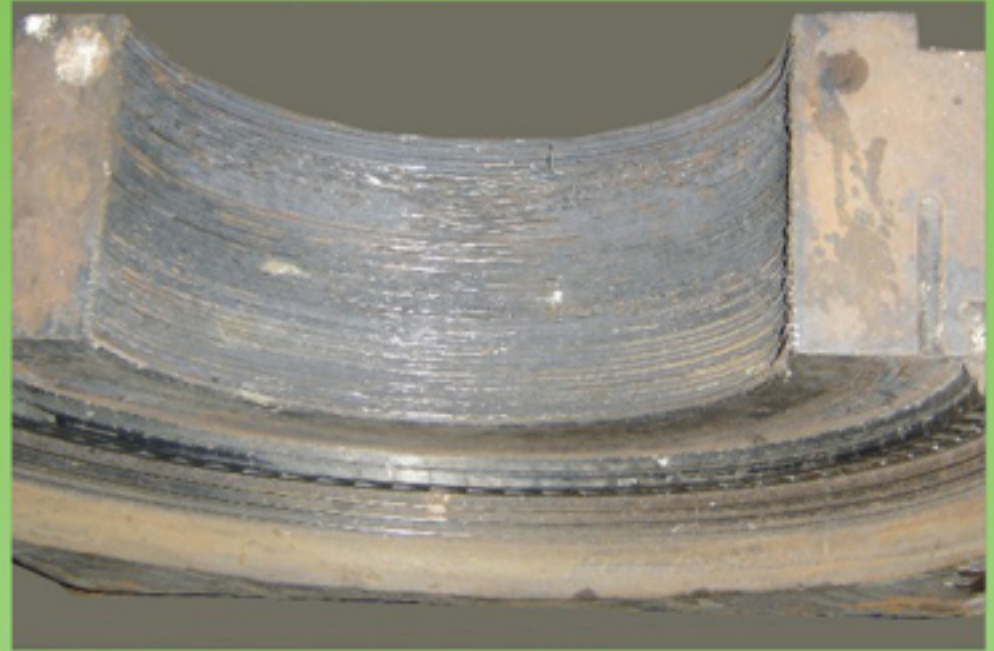
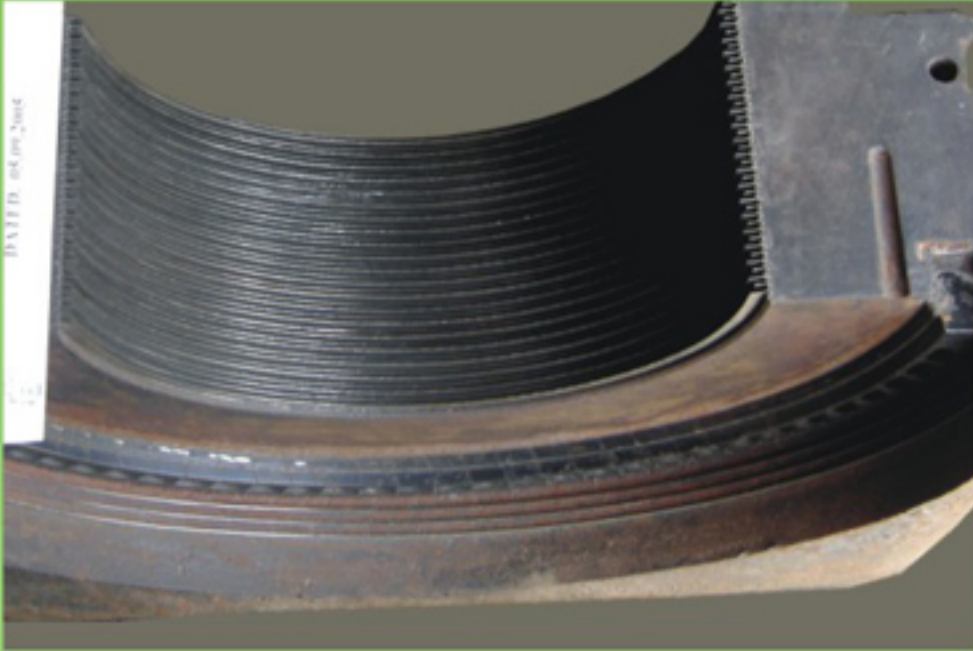
New first stage nozzle fitting into turbine body



Complete Fatima Sugar Mills, Mill House & Shredder turbine body fitting in crushing season 2007

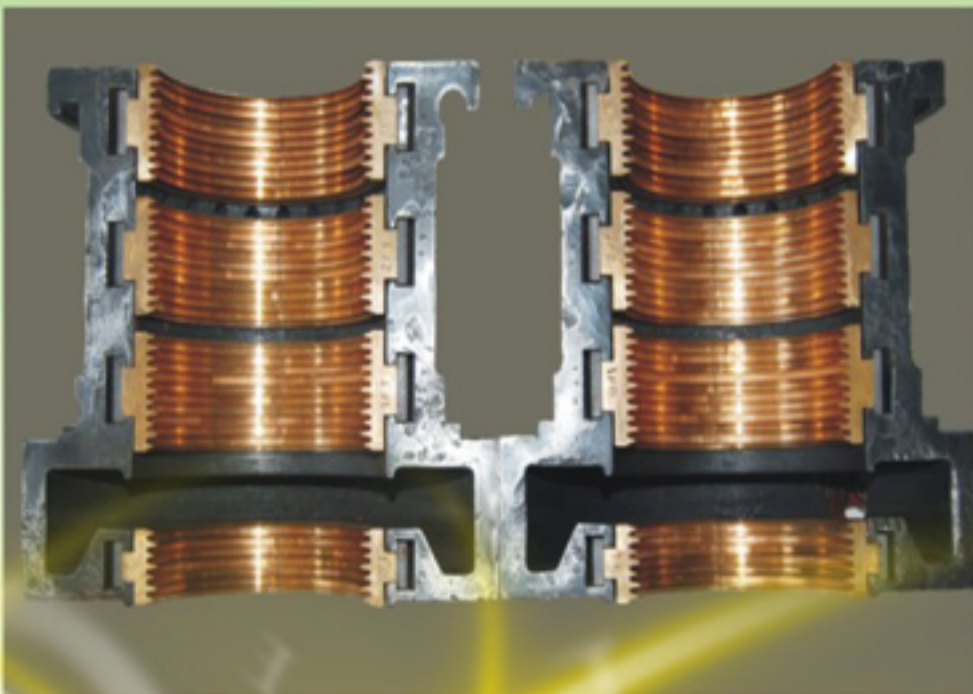


All kinds of labyrinth seals for steam & gas turbine Power House and Mill House turbines and refurbishing of old and new labyrinth seals.

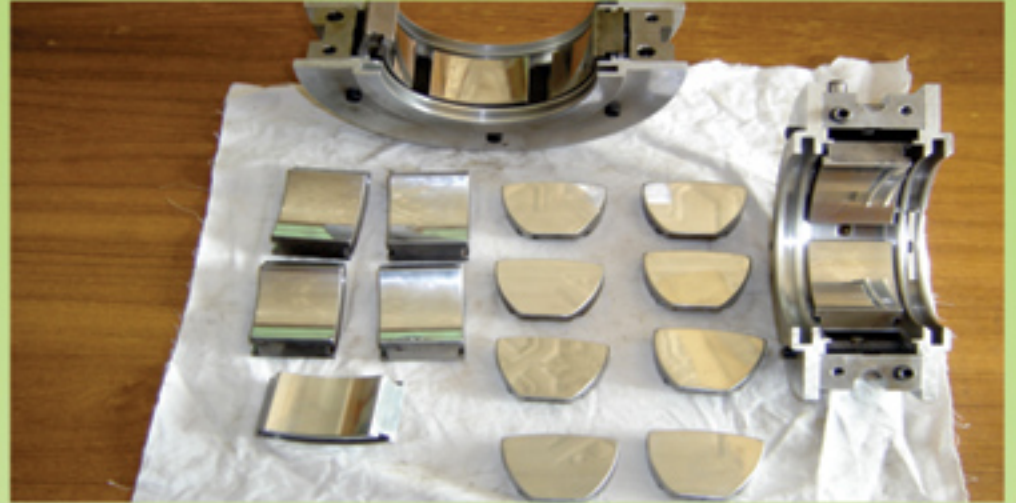
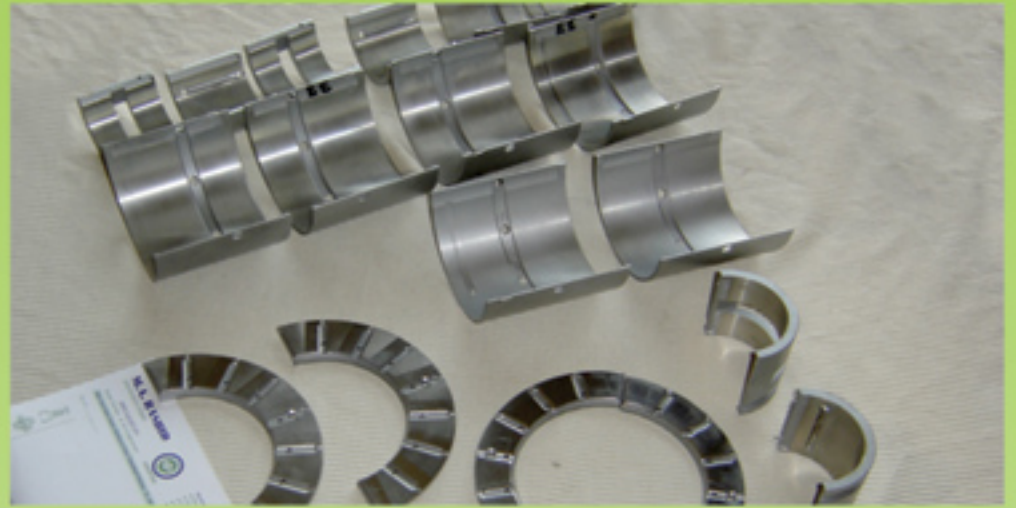


Reconditioning of turbine rotor blades
10 MW for power house.

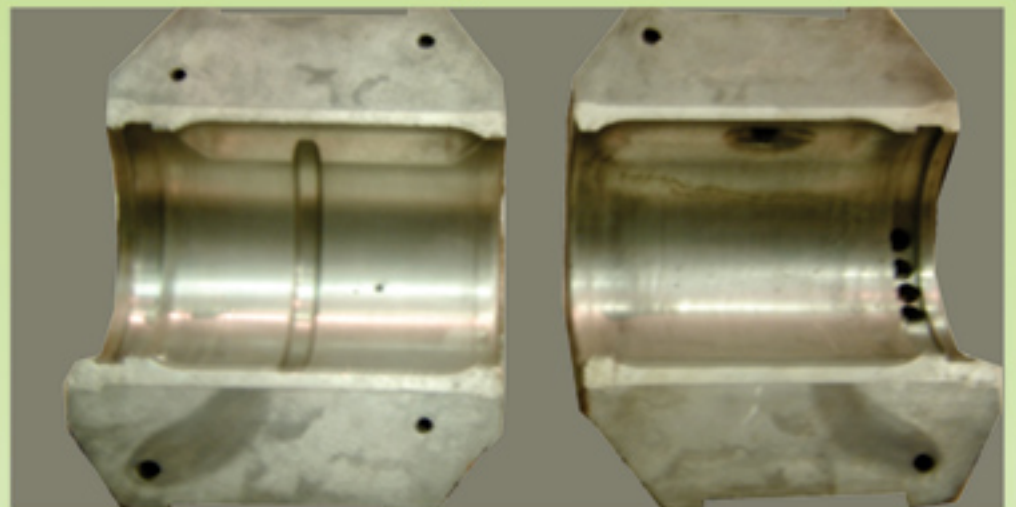
Various types of new manufacturing of oil seals and steam labyrinth Seals steam turbine.
New Manufacturing of KKK & Peter Brothers Hood and Shinko Turbine
for Mill House & Power House



New Manufacturing of all kinds of Steam Turbine Rotor Bearings and Thrust Pads for Power House Generator Bearings



New Manufacturing of all kinds of Power House Generator bearings



New Manufacturing of Toyo Donkey Shinko Turbine Power House Generator Bearing for Kamalia Sugar Mills.



UPGRADING OF TURBINES

It is our privilege to write you this letter informing that by grace of God we have been able to upgrade any kind of Turbine, which increases the efficiency, and profit of the mills.

Recently we have List of our clients and the brief details of the job done are given below.

01. Bawany Sugar Mill: upgraded KKK Turbine 450 KW to 650 KW and the other KKK Shredder Turbine from 1250 KW to 1850 to 2000 KW.
02. Husein Sugar Mills: upgraded KKK Turbine 450 KW to 650 KW KKK Shredder Turbine dated 18.05.07.
03. Matiari Sugar Mills: upgraded 04.No. Mill House KKK Turbine 450 KW to 650 KW dated 04.06.07.
04. Madina Sugar Mills: upgraded feed pump Turbine and Mill House Turbine.
05. Fatima Sugar Mills: upgraded 04.No. Mill House KKK Turbine 650 KW to 850 KW and KKK Shredder Turbine from 1250 KW to 1850 to 2200 KW. Dated 12.08.08-09.
06. Khairpur Sugar Mills: Upgraded 04.No. Mill House Turbine 500Kw up to 700 KW dated 14.06.08
07. Safina sugar Mills Ltd: upgraded 01.No KKK Shredder Turbine from 1250 KW to 1850 KW dated 08.07.09
08. Huda Sugar Mills Ltd., Sangla Hill: Upgraded AEG Shredder Turbine 01.No from 850 KW to 1250 KW and Mill House KKK Turbine from 450 KW to 650 KW dated 26.08.09.
09. Tharparkar Sugar Mills Ltd: Upgrading and addition of New Nozzles Fibrizer ELLIOTT Turbine 1500KW to 1850KW. Dated 08.03.10
10. Mehran Sugar Mills Ltd: Upgrading of Mill House DRESSER-RAND 450KW to 650KW 06.No Turbines. Dated 21.04.10
11. Chanar Sugar Mills Ltd: Upgrading and addition of New Nozzles for SHREDDER Shinko Turbine 1600KW to 1950KW. Dated 05.07.10

We are happy to inform you that the results are very encouraging. This work has been done in the crushing season 2005 to 2010.

These turbines were running over-load and now its efficiency has improved considerably and are now running under-load. This can be verified from concerned sugar mills.

Furthermore we have started manufacturing new blades and new rotors. You are cordially invited to visit our workshop and see yourself the blades and the rotor.

Awaiting to receive your positive answer at an early date.

List of our honorable clients and the brief details of the job done is given below:

Sr.#	NAME OF SUGAR MILLS	DATE	DESCRIPTION
1	Husein Sugar Mills Ltd.,	18.05.07 to 18.05.10	Upgrading of shredder KKK Turbine 450KW upto 600KW
2	Matiari Sugar Mills:	18.05.07 to 2010	upgraded 04.No. Mill House KKK Turbine 450 KW to 650 KW
3	Larkana Sugar Mills:	29.01.1999	2 Rotors of the China made turbines have been re-built
4	Kiren Sugar Mills:	13.4.1997 to 2010	2 Rotors of KKK Turbine of 1500 KW have been completely rebuilt By our own manufactured blades.
5	Tharparkar Sugar Mills:	21.08.1999 to 2010	1 Rotor of 1500 KW turbine was repaired and re-built
6	Ranipur Sugar Mills:	04.11.1999	Repair of Mill House Steam Turbine Rotors and nozzels
7	Mirpurkhas Sugar Mills:	17.02.1999 to 2010	1 Rotor and steam nozzle diaphragm of KKK turbine have been repaired and rebuilt by our own manufactured blades.
8	Mirpurkhas Sugar Mills:	21.06.05 to 17.05.10	Repair of Mill house (weir)turbine diaphragms
9	Fauji Sugar Mills Khoski	13.08.2001	Repair of Power house Turbine Nozzles rotor 3000 .KW
10	Dewan Khoski Sugar Mills	29.07.04 to 28.05.08	Repair of Power house Turbine rotor and Nozzles.2500.Kw
11	Bawany Sugar Mills	28.05.2005 to 2010	Up Grading of shredder KKK turbine 1500 to 1800 Kw. Repair of P H Turbine Rotor
12	Bawany Sugar Mills	15.05.2006 to 2010	Repair of Unigrator Multi-Stage Turbine Rotor (Elliot) 2000.Kw
13	Dewan Sugar Mills	15.05.2006 to 2008	Repair of P.H. Milti-stage Turbine Rotor & Labyrinth seal 2000. Kw
14	Khairpur Sugar Mills	11.04.2005 to 2010	Re conditioning & Re-Blading KKK P.H Turbine 2000. Kw
15	Matiari Sugar Mills	07.02.2005 to 2008	Repair & Replacement of Steam Turbine Nozzles for Turbo Feed Pump 250.Kw
16	Mirza Sugar Mills	23.09.2002	Repair of High pressure Nozzles of shredder Turbine 2000.Kw
17	Sanghar Sugar Mills	25.08.2005	Peter Brotherhood 2000 KW turbine shaft was built up, polished and Refitted
18	Hyesons Sugar Mills	09.04.1998 to 2010	Repair of Peter Brother hood Fibrizer Turbine 2000. Kw Repair of Mill house 1200.Kw Shinko Turbine Rotor & Nozzle
19	Hamza Sugar Mills	03.06.03 to 13.07.08	Repair of Mill house KKK 650.Kw Turbine Rotor Mill House KKK 1060. Kw Turbine Rotor Repair of Power House Milti-stage Turbine Rotor 3000.Kw
20	Crescent Sugar Mills	26.04.02 to 24.04.03	Repair of Mill House KKK 750.Kw Turbine Rotor
21	Shakarganj Mills Ltd.	10.09.99 to 23.04.08	Repair of Milti-stage Shredder Turbine Rotor 2000.Kw & Nozzle
22	Yousaf Sugar Mills	15.10.01 to 07.10.02	Repair of Thrust Pads (Shinko turbines) Repair of Reversing Nozzles & Rotor (Feed Pump Turbines) KKK
23	Brothers Sugar Mills	27.09.99 to 02.06.03	Peter brother Mill House Turbine Rotor Repairing
24	Kamalia Sugar Mills	25.08.2002	Repairing of K K K turbine Rotor and reversing Nozzles. Remetalling of turbine Bearings.
25	Tandlianwala Sugar Mills	28.04.2005 to 2008	KKK Turbine Journal Bearing & Thrust Re-filling
26	J.D.W. Sugar Mills	30.04.2005	Repair of turbine Shaft & Grinding & Remetalling of different Bearings.
27	Layyah Sugar Mills	13.08.2002	Repair of Turbine Governor (Woodward) UG-8 Shaft Grinding Re-Metalling Journal & Thrust Bearing
28	Fecto Sugar Mills	22.12.00 to 06.10.03	Repair of Peter Brother Shredder Turbine Rotor Repair of KKK Feed Pump Turbine nozzle.
29	Chashma Sugar Mills	21.08.2002 to 2010	Repair of 4 MW Multistage Power House Turbine Rotor Repair of 2 MW Multistage Power House Turbine Rotor.
30	Premier Sugar Mills	29.01.02 to 29.06.04	Repair of Power House Multistage Turbine Rotor
31	Frontier Sugar Mills	13.08.2002	Repair of Rotor and fixed on the Rotor Shaft
32	Bannu Sugar Mills	26.12.01 to 10	Up Grading of shredder Turbine Peter Brother 1500 to 2000. Kw
33	Hanza Sugar Mills Ltd.	09.10.2004	Upgrading and addition of New Nozzles Fibrizer ELLIOTT Turbine 1500KW to 1850KW.
34	Tharparkar Sugar Mills	08.03.2010	New Re-Balding of High Pressure 1st Stage Rotor Blades for Power House 1580KW KKK Turbine.
35	Sindh Abadgar's Sugar Mills	03.04.10	Repair of Turbo Charger Turbine Blade and made new Turbo Body.
36	Zaman Energy Company:	22.12.2002 to 2008	

We assure you of our excellent work and at much cheaper price than being offered from Europe or India. Hope to receive your kind patronage and look forward to receiving your positive reply.

Yours faithfully,

Shahid Javed

For M.A.Rashid Engg:Works



Refurbishing is our Art



M.A. Rasheed Engineering Works

Near Jamilabad Chowk, Sheikhpura Road,
Faisalabad-Pakistan.

Tel: +92-41-8753580 Cell: +92-300-6634932 Fax: +92-41-8753579
E-mail: marew.fsd@gmail.com